

Description:

ADIY XBee USB adapter (CP2102) unit works with all XBee modules including the Series 1 and Series 2.5, standard and Pro version. Plug the unit into the XBee Explorer, attach USB cable, and you will have direct access to the serial and programming pins on the XBee unit.

The board also has a CP2102 IC, USB to Serial chip on it, thru which you can connect your computer via USB. The CP2102 is connected such that you are able to reprogram the XBee modules to change the firmware. The board is powered by the USB cable.

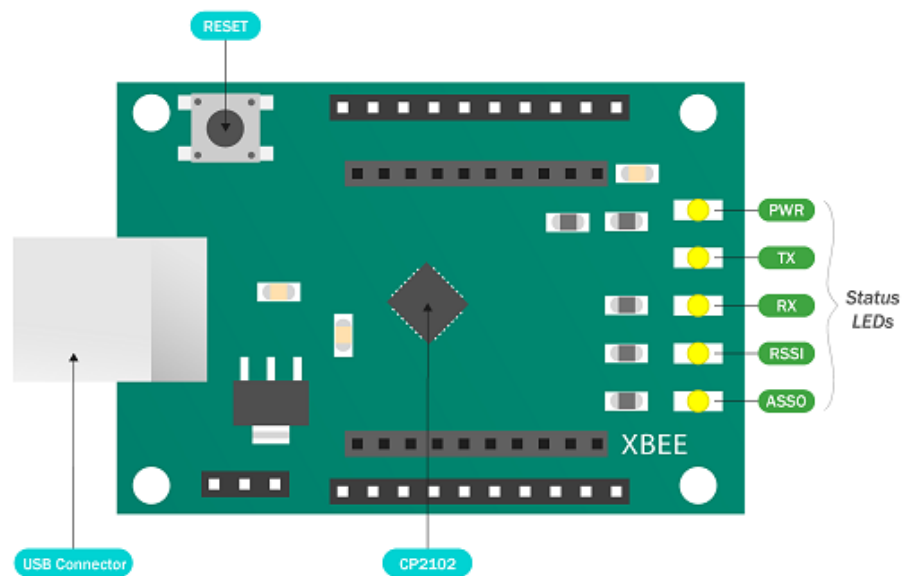
Features:

1. Compatible with all Zigbee modules (Series 1 and Series 2.3, standard and Pro)
2. The built-in 3V3 voltage regulator
3. Onboard 3V3 to 5V level convertor
4. USB Powered
5. Reset Button

Specifications:

- IC Chip :- CP2102
- Input supply voltage :- 3.3 ~ 5V
- Connectivity :- USB
- USB Interface :- type -B

Pin Description:



Application:

- IOT applications
- Wireless devices
- POS, robotics